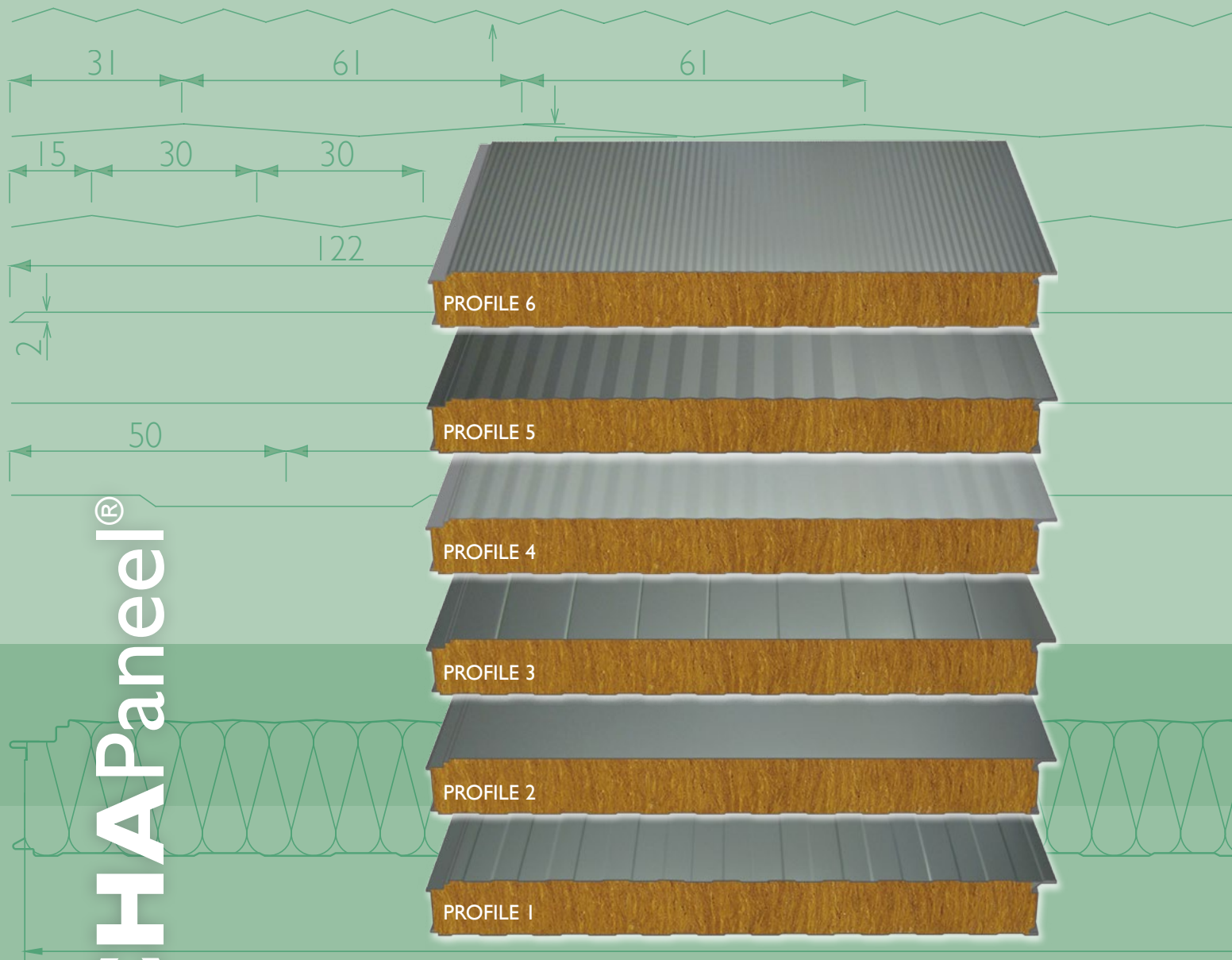


BRUCHA[®]Panel



Fire Protection Façade – FP-F

COVERED MOUNTING

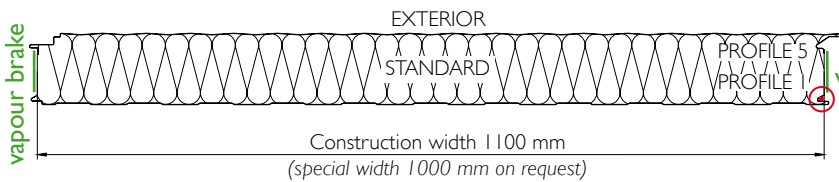
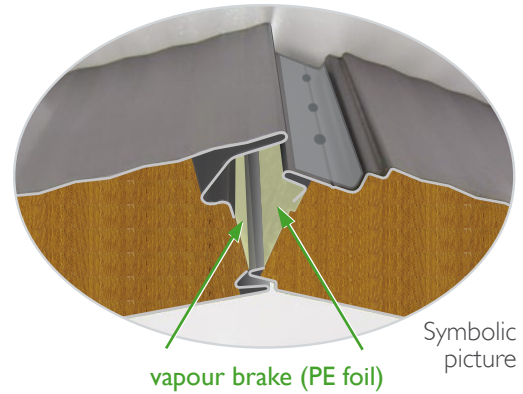
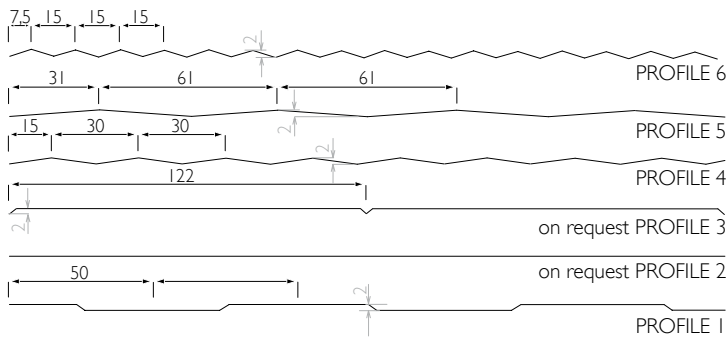
- good SOUND INSULATION
- rich DIVERSITY OF PROFILES
- more ECONOMIC PROCESSING through greater construction width
- high load bearing capacity
- HIGH FIRE RESISTANCE
- non-combustible



Fire Protection Façade – FP-F

COVERED MOUNTING

FP-F PROFILES

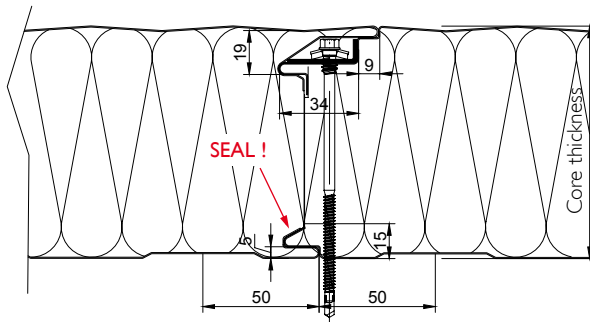


Metal gauge: double-sided 0.6 mm
(smaller gauge on request)

BRUCHAPanel FP-F with mineral wool core possible combination to BRUCHAPanel FP with PU/PIR core with adapter panel.

FP-F JOINT CONNECTION

Pressure distribution plate (Z29) for improving static load properties of the system available according to the list of accessories!



Gap-joint connection: 2 mm ± 2 mm tolerance

In the exterior section of the BRUCHAPanel FIRE PROTECTION façade panel FP-F the mineral wool must be cut back in the plinth area outside.

Panel Type	Core thickness mm	U-Value W/m²K acc. EN 12667 incl. gap	U-Value W/m²K acc. EN 14509 incl. gap	Weight kg/m²	Fire resistance**
FP-F 60	60	0.62	0.67	17.8	EI 30
FP-F 80	80	0.48	0.51	20.2	EI 60
FP-F 100	100	0.39	0.42	22.6	EI 90
FP-F 120	120	0.33	0.35	25.0	EI 120
FP-F 150	150	0.26	0.28	28.6	EI 120
FP-F 160	160	0.25	0.27	29.8	EI 120
FP-F 200	200	0.20	0.22	34.6	EI 120
FP-F 240	240	0.17	0.18	39.3	EI 120

**certificates on request

Manufacturing tolerances:	in acc. with EN 14509
Manufactured lengths:	max. 15.0 m (extra long transport required above 13.6 m) ATTENTION! Long panels may buckle due to higher weight!
Span table:	by Dipl.-Ing. Dr. techn. Wilhelm Pilgram – Vienna
Sound insulation:	approx. 32 dB (frequency dependent)
Vapour diffusion:	Determined by climatic conditions inside building. Panels must be installed vapour tight. Technical installation tips are provided in the installation guidelines at: www.brucha.com/downloads

BRUCHAPaneel® Fire Protection Façade – FP-F

DESIGN AND SURFACES

coil-coated, galvanised flashings

Exterior:

- Visible side 25 µm polyester coating with a protective PVC film to be removed when construction work is complete, no later than 10 weeks from production date - visible on longitudinal joint (protect from direct sunlight).
- Profile 5 = Standard, other profiles - see **FP-F PROFILES** · Page 48

Interior:

- Visible side with 25 µm polyester coating with a protective PVC film to be removed when construction work is complete (protect from direct sunlight).
- Profile 1 = Standard (on request: Profile 2 and 3)

Insulation core:

- structural, web-oriented mineral fibre wool
- shear resistant bond with sheet steel covers
- Density approx. 120 kg/m³, 140 kg/m³ available on request
- fire behaviour in acc. with EN 13501-1, Euroclass A1, **non-combustible**

Exterior and interior standard colours:

- acc. to BASIC range of colours (Page BRUCHA•10)

Panel connections:

- „Tongue and groove system“ in which the special labyrinth profile allows the bolt head to be counter-sunk and completely covered by the next panel – covered, hidden mounting.

Tendering text:

- download at: www.brucha.com

Independent monitoring:

National and international tests, quality standards
(Page BRUCHA•12/13)



EPAQ European Quality Assurance Association for Panels and Profiles

Certificates furnished upon request!

BRUCHA[®]Panel



PU/PIR &
Fire Protection Façade
FP and **FP-F**
RAL 9006 and 9007
Corner panel PU FP60
RAL 7016 Profile 2



united in panels