



White glass cloth G220

White glass cloth G220

Glass filament fabric, white coloured.



Marine approval

Certificated for marine applications (Low Flame Spread according to IMO).



Mechanical resistance

Strong mechanical protection of the wool.



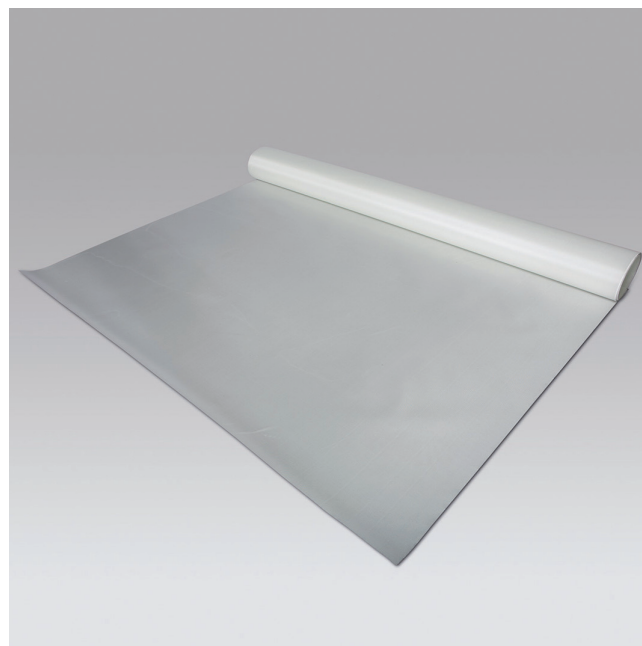
Easy handling

Rolls in handable delivery form that can be carried by one person (< 20 kg). Can be cleaned by wiping or gentle washing.



Noise control

Excellent absorption properties when combined with mineral wool substrate.



White glass cloth G220



Characteristic	Symbol	Unit	Quantities and measured values	Standard
Application fields	-	-	Facing of mineral wool products	-
Material	-	-	E-glass filaments woven fabric, white coloured, low flame spread surface material, consistent structure, non-slipping filaments, fibres with a diameter of $\leq 3 \mu\text{m}$ can not be contained.	-
Texture weave	-	-	Linen	DIN 61 101/1+2
Gramweight	-	g/m ²	210 – 220 \pm 5 %	DIN EN 12127
Behaviour in fire	-	-	Low Flame Spread according to IMO. Certificate Nr.: 118.168	IMO-Resolution MSC.61(67)-(FTPCode), IMO MSC/Circ. 1120
Tensile strength	-	N/50 mm	warp: ≥ 1500 weft: ≥ 900	ISO 4606

Delivery form*			
Length [m]	Width [m]	Diameter [m]	Weight per roll [kg]
55	1,25	0,18	19

www.isover-technical-insulation.com

The technical information corresponds to our present state of knowledge and experience at the date of printing (see imprint). But no legal guarantee can be given, unless it has been explicitly agreed. The state of experience and knowledge is developing continuously. Please see to it that you always use the latest edition of this information. The described product applications do not take special circumstances in consideration. Please verify whether our products are appropriate for the concrete application. For further information please contact our Isover sales offices. We deliver only according to our terms of trade and terms of delivery.

ISOVER
SAINT-GOBAIN